

INSTRUCTION MANUAL

AIR POWERED PRESSURE PAINT TANK



- DP6411H/PT-10 10L paint tank (hand mixing)
- DP6411A/PT-10A 10L paint tank (air mixing, air agitator)
- DP6412H/PT-20 20L paint tank (hand mixing)
- DP6412A/PT-20A 20L paint tank (air mixing, air agitator)
- DP6414H/PT-40 40L paint tank (hand mixing)
- DP6414A/PT-40A 40L paint tank (air mixing, air agitator)
- DP6416H/PT-60 60L paint tank (hand mixing)
- DP6416A/PT-60A 60L paint tank (air mixing, air agitator)



WARNING

- Please breathe the lube into the tools usually.
- Wear ear and eye protection.

Preface

This air-power blending Painting Tank consists of pneumatic motor, air regulator, safety valve, outlet valve, paint exit hole, inner tank and 4 casters .All the parts are made of good material, and be strictly examined before assembly. Seamless steel body construction of pressure tank for long durability. Air-actuated paint stirring keeps paint from depositing at the tank bottom. There will be no color deviation because of dope deposition. This Product is not only used for dope, but also for other paints.

Precautions

After finishing the work, in order to reduce the demand of maintaining parts, the paint tank must be carefully cleaned.

Warning

This product permits the coating pressurization to get to 80PSI. If the pressure exceeds the allowed range, may result in exploding.

The safety valve on the barrel is used for protecting the pressure barrel, in order to avoid the device of excessive pressure. Has already established it on the pressure permits range before dispatched from the factory. So when it used under the normally state, please don't change at will. Make sure not to do any dangerous work in the whole body, such as bore, welding, etc., Because it may produce the flash back effect and hurt the barrel body, then reducing its durability.

Operating Instructions

Before using, please make sure that there wasn't any pressure remaining in the barrel. Operator can use the outlet tap, which on the outlet valve to discharge the remaining pressure thoroughly, and ensure the security!

1. Unclamp the butterfly nut and the live bolt, takes the barrelhead away.
2. Pour the paint into the barrel.
3. Cover the barrelhead; screw the butterfly nut one by one diagonally.
4. Connect the air hose with the air inlet elbow which on the barrel (And the air hose had better to pass a fitter, so that can filtrate the dusty, impurity, moisture and oil stain in the compress air.)
5. Connect the air outlet export to the air outlet cock.
6. Open the regulating valve for the amount of wind, then deasil adjust to the proper position. Controls the speed of the pneumatic motor and mix the paint in the barrel.
7. Connect the paint hose to the paint outlet cock..
8. Open the blowing system; deasil adjust the press valve to necessary working pressure .If wanting to reduce the pressure in the barrel, do it counterclockwise. (**Notice:** This product bears max. pressure 80PSI)
9. Open the air outlet cock.
10. Open the paint export cock.
11. The spray size can be adjusted directly by the regulate valve on it, or install another regulate device on the barrel to control it.
12. According to the spray gun instruction to operate the spray gun.
13. The following graphic presentation are the situation of whole devices, please consult it.

Maintenance and Cleaning

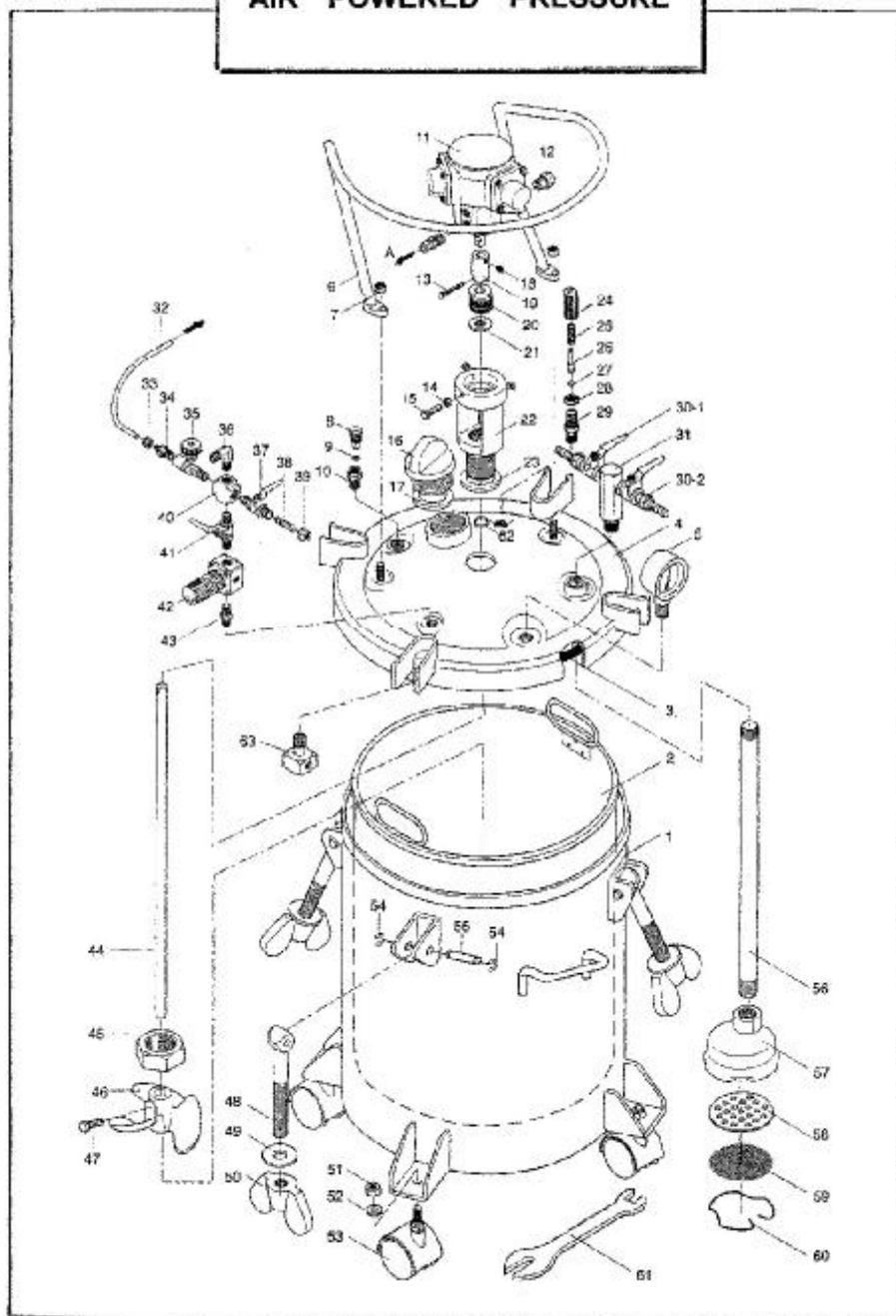
1. Close the air inlet cock.
2. Open the paint outlet cock.
3. Turn on the outlet tap, which on the outlet valve to discharge the remaining pressure thoroughly.
4. Unclamp all butterfly nuts; make the barrelhead oblique to one side.
5. Turn on the jelaouch which on the spray gun about three turn.
6. Cover a calathiform cloth on the jelaouch: butter the trigger. So that compel the paint which remaining in the paint hose back to the barrel.
7. Spill the paint from the barrel, and clean all parts that may touch with the paint use detergent. (Include within the coating barrel)
8. Pour the detergent into the barrel.
9. Cover the barrelhead and lock it
10. Open the air inlet cock.
11. Operate the spray gun until the clean solvent appears.
14. Please repeat movements of 1-8, to compel the detergent, which in the paint hose back to the barrel.

Notice: The safety valve must keep clean at any time.

Trouble and Solution

Phenomenon	Cause	Solution
The indicator of the manometer is not moved.	Hammerblow may cause it.	Replace the manometer.
The paint is easy to precipitate.	1. Do not mix up it symmetrical. 2. Vane may be loose. 3. Trouble of the pneumatic motor	1. Fortify mix. 2. Replace the damaged parts of the motor. 3. Screw the vane.
Gas or liquid overflow from the airtight cushion place on the barrelhead.	Airtight cushion damaged or the butterfly nut has not been locked	Replace the airtight cushion or lock nut.
Locked the outlet valve, still leaking gas.	The O-ring in the outlet tap be damaged.	Replace the O-ring.
The paint cannot send suitably.	The head filter jammed or the paint hose do not be thoroughly cleaned.	Check and cleaning.
The motor base leaks gas.	1. #62 O-ring damaged. 2. #21 Seal damaged.	Replace the O-ring or the seal.
Notice: Checking manometer frequently. Under no pressure state, the indicator should return to zero .		

AIR POWERED PRESSURE



PARTS NO.	DESCRIPTION	QUANTITY	PARTS NO.	DESCRIPTION	QUANTITY
1	Main body	1	33	Nut	1
2	Material tank	1	34	Adapter	1
3	Gasket	1	35	Air valve	1
4	Lid assembly	1	36	Elbow (air inlet)	1
5	Pressure gauge	1	37	Air outlet cock	1
6	Parts guard	1	38	Air outlet	1
7	Hexagon nut	2	39	Nut	1
8	Release cock	1	40	Four – way block	1
9	O – ring	1	41	Air inlet cock	1
10	Adapter	1	42	Pressure regulator	1
11	Air motor	1	43	Adapter	1
12	Noise eliminator	1	44	Agitating rod	1
13	Cotter pin	1	45	Hexagon nut	1
14	Hexagon nut	1	46	Agitating propeller	1
15	Screw	1	47	Screw bolt	1
16	Cap screw	1	48	Swing bolt	4
17	O – ring	1	49	Washer	4
18	Set screw	1	50	Thumb nut	4
19	Connecting bush	1	51	Hexagon nut	4
20	Centering guide	1	52	Washer	4
21	Seal	1	53	Moving wheel	4
22	Motor base	1	54	C – snap ring	8
23	Seal ring	1	55	Pin	4
24	Safety valve shell	1	56	Fluid tube	1
25	Spring	1	57	Absorption apparatus	1
26	Needle rod	1	58	Filter base	1
27	Steel ball	1	59	Material filter	1
28	Hexagon nut	1	60	Snap ring	1
29	Adapter	1	61	Spanner	1
30	Material outlet cock	2	62	O – ring	2
31	Material outlet adapter	1	63	Air flow guider	1
32	Air hose	1			